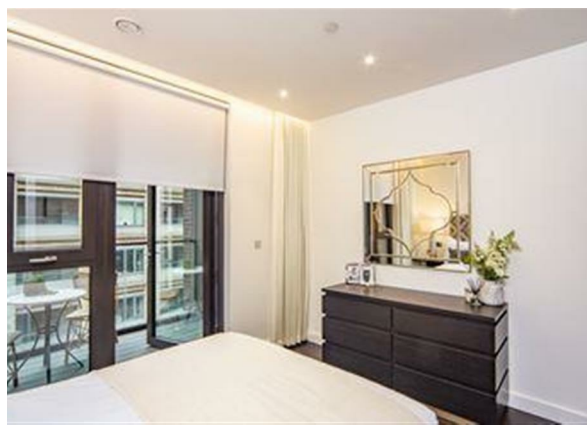
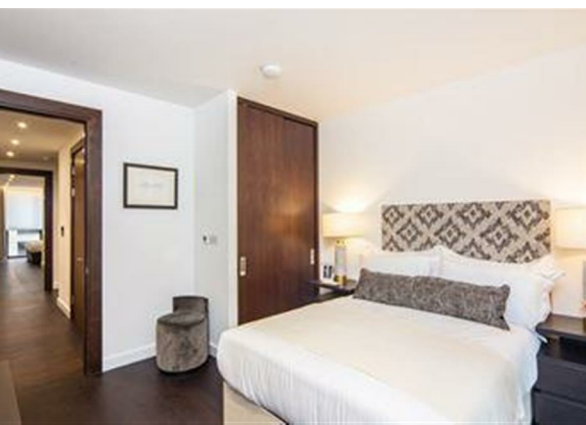
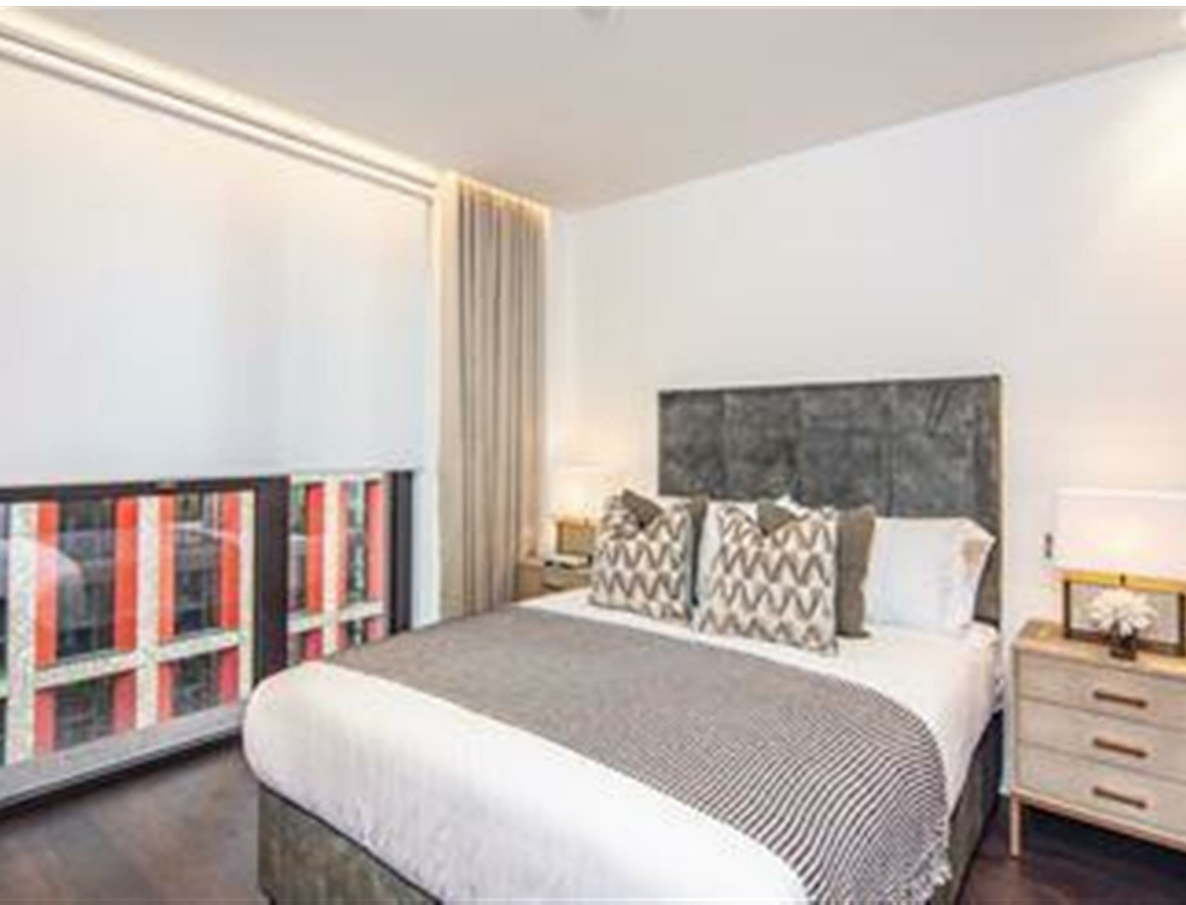


Thornes house, 36 6-8 Charles Clowes Walk, Nine Elms, London, SW11 7AG
£1,120 Per Week

COMPLETION
SALES & LETTINGS



A modern bathroom with a glass shower enclosure, a white sink, and a large mirror.

Thornes house, 36 6-8 Charles Clowes Walk, Nine Elms, London, SW11 7AG

£1,120 Per Week

Council Tax Band:

Welcome to this stunning new build house located at 6-8 Charles Clowes Walk in the vibrant area of Nine Elms, London. This contemporary property offers a perfect blend of modern living and comfort, making it an ideal choice for families or professionals seeking a stylish home in a thriving community.

Spanning an impressive 864 square feet, this house features a well-designed layout that includes one spacious reception room, perfect for entertaining guests or enjoying quiet evenings with family. The property boasts three generously sized bedrooms, providing ample space for relaxation and privacy. Additionally, there are two modern bathrooms, ensuring convenience for all residents.

The location of this property is particularly appealing, as Nine Elms is known for its excellent transport links and proximity to the River Thames. Residents can enjoy a variety of local amenities, including shops, restaurants, and parks, all within easy reach. The area is rapidly developing, making it an exciting place to live









337 Forest Road
London
E17 5JR
02085277007
enquiries@completion.co.uk
completion.co.uk

Energy Efficiency Rating		
	Current	Potential
Very energy efficient - lower running costs		
(92 plus) A		
(81-91) B	87	87
(69-80) C		
(55-68) D		
(39-54) E		
(21-38) F		
(1-20) G		
Not energy efficient - higher running costs		
England & Wales		
EU Directive 2002/91/EC		